

The Diver6 System Includes



- Diver Modems
- Topside Modem
- Topside Battery & Case
- Ruggedized Tablet Computer
- Diver6 Software
- Chargers for Diver Modems & Topside Battery
- Cylinder Mounts For Diver Modems
- Pelican Cases for Equipment & Computer
- Tools / Spares Kit
- Topside Modem Mounting Kit

Optional Equipment

 **SHEARWATER** Petrel, Near Eye Remote Display (NERD), & Pressure Sensors

The Shearwater products enhance Diver6 by providing added vital information (tank pressure and dive computer data) and navigational information for assisting and sending divers to locations.



Customized Diver6 Shearwater Petrel



Shearwater Single / Dual Pressure Sensor



SWIFT Wireless Transmitter
(Requires Petrel)



Customized Diver6 Shearwater NERD

Department of Commerce Export Administration Regulations (EAR) - Export Control Classification Number (ECCN): EAR99

Manufactured By

Product orders & demonstrations

MADE IN THE
USA



www.diver6.com
info@diver6.com

We've Got Your Six



Diver safety evolved



Diver tracking system through acoustic wave technology



Beyond Bubble Tracking

Diver6 is a diver tracking, safety and situational awareness management system. Using acoustic underwater communication technology, Diver6 can track and monitor multiple divers at ranges up to 1000 meters and depths of 100 meters.

Using the experiences of real-world subject matter experts (US Navy SEALs & EOD, Salvage Divers, Coast Guard, and public safety divers), Diver6 provides up to date information on the divers allowing the divemaster to make faster, safer, and more accurate decisions.

diver modem

The Diver Modem is a compact low weight ultra-short baseline (USBL) unit. The unit consists of the Diver Control Module (DCM) and the transmitting beacon. When a request is made from the Topside Modem, the Diver Modem communicates its information to the surface. The unit also features a DiveCAN connection to connect Shearwater products.

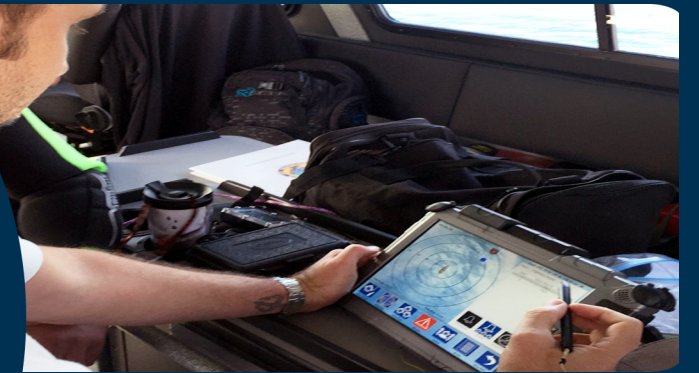
- Size: 2.4" (61 mm) x 13.1" (333.7 mm) long
- Weight: 3.2 lbs (1.45 kg) dry & 1.6 lbs (.72 kg) wet
- Battery: 8+ hours
- Bandwidth: 5 kHz
- Baud Rate: 8 to 15k bps (140 bps)
- Range: up to .62 miles (1000 m)
- Enclosure: 316 SS and acetyl copolymer
- Depth: 150 psi, 346' (105 m)



topside modem

The Topside Modem transmits in an omnidirectional toroidal pattern with a range of 1 kilometer. Using an ultra-short baseline (USBL). The unit receives data on 360 degrees bearing with a vertical elevation of +/- 50 degrees. The modem performs a round-robin polling of diver modems and reports information to the Diver6 tablet software.

- Supply Voltage: 9V to 28V DC
- Acoustic Range: 1km radius horizontal, 1km vertical
- Range Resolution: ±50mm (dependant on VOS accuracy)
- Angular Resolution: ±1°
- Communication: Broadband spread spectrum encoding, 24-32kHz, 100 baud. Multi-tiered Acoustic Protocol Stack.
- Transmit Sound Pressure Level: ~172dB re 1uPa @ 1m
- Size: Diameter, 55mm (2.16") , Length, 132 mm (5.2")
- Weight: 708g (1.56lbs) in air, 508g (1.12lbs) in water



tablet & software

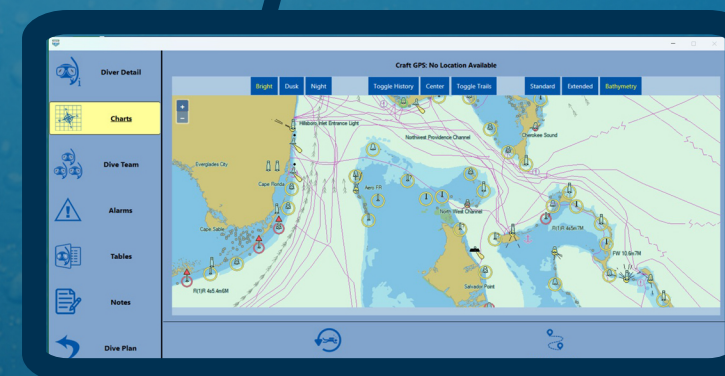
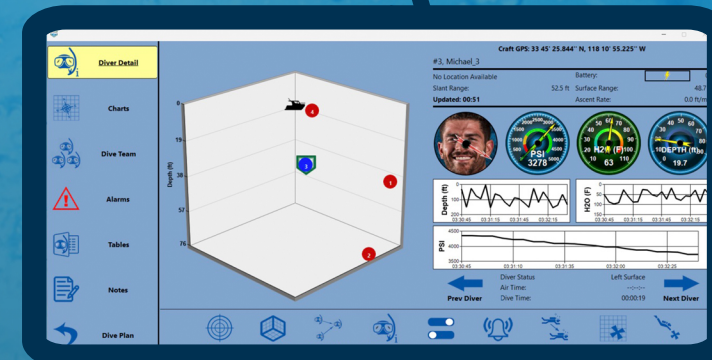
Diver6 software is a platform suite specifically developed to provide dive masters with multiple views of the divers in the water.

Depth, bearing, range, and vitals are now available topside for observation. Divemasters can easily create a dive plan that assists with the monitoring and management of the dive operation. All monitored aspects are recorded and can be accessed for analysis and personnel dive records.

Diver6 enhances the safety of divers by providing up-to-date situational awareness information to supervisors so they can accurately manage the dive operation and enhance safety.

Features

- 2D, 3D, Charts Views
- Customized Alarms
- View Diver / Dive Team Information
- Diver Assist, Recall, Send
- Aqua-Spatial Data Logging
- Data Export (GPX, Raw, CSV, PDF)
- Standard Dive Tables for reference
- Intuitive Touch Interface
- Diver Profile & Dive Plan Management
- Dive Event Annotation
- Diver Overlay on ENC Charts



Topside Battery Unit

- Lightweight and Portable
- Cabled or Wireless
- 24V – 4.9 Amp Hours
- Nickel-Metal Hydride BB-390B/U
- Transport Regulations Compliant

Tablet Computer

- MIL-STD 810G certified and IP67 rated
- Sunlight Readable Display
- Tethered Stylus
- LED-backlit display Sunlight Readable
- 6 to 8hr battery life.
- Dimensions: (WxDxH) 12.3" x 8.0" x 0.96" (312 x 203 x 24 mm)
- Weight: 2.82 lbs. (1.3 kg)